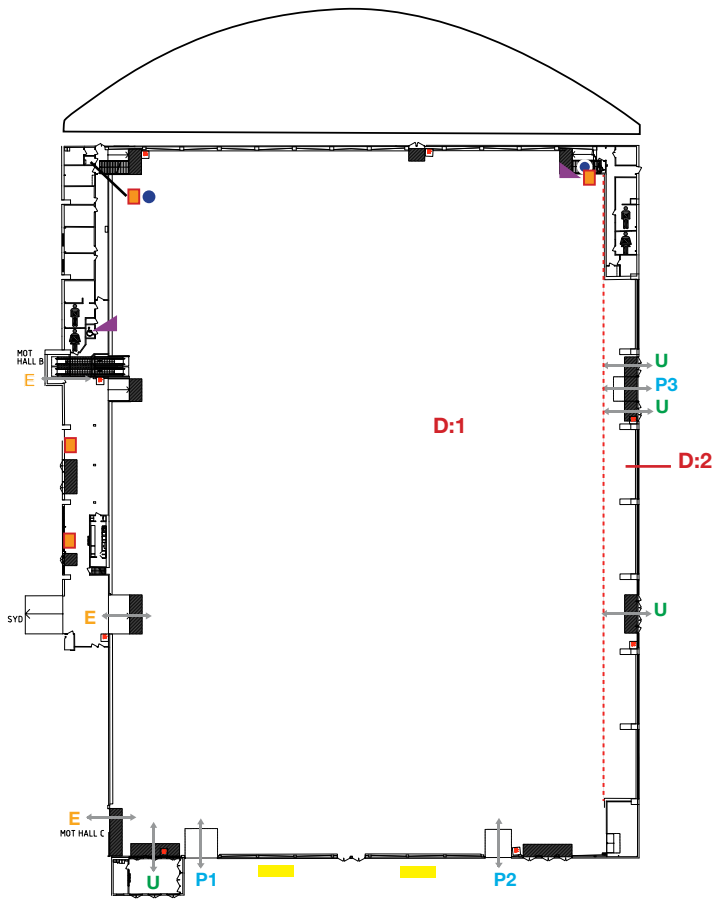
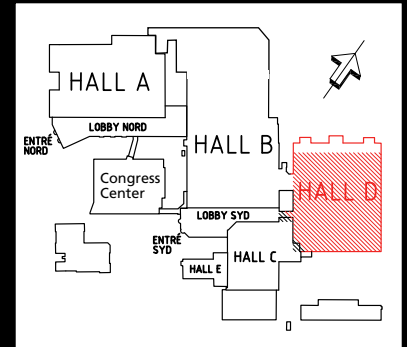




Hall D

Hall D is our second largest hall with its best ceiling height in the centre. The hall is free from pillars. Hall D is connected to Hall C and Lobby Syd. There is a connection to Hall B in the north western section of the hall.



E Visitor entrance P Vehicle entry doors U Exit outdoor



-  Fire hydrant
-  Waste and Recycling Center
-  Water
-  Electricity 220 V
-  Nursery room
-  Elevator
door: 90x200 cm
area: 110x110 cm
6 people 500 kg

Section	D:1	D:2
Floor space (ca) m ²	8 730	370
Overhead ceiling clearance	6,0-18,5	2,7
Floor loading kg/ m ²	4 000	4 000
Vehicle entry doors 1, m, h x b	4,7 x 5,0	
Vehicle entry doors2, m, h x b	4,4 x 4,0	
Vehicle entry doors 3, m, h x b		3,5 x 3,6
Comfort cooling	yes	yes
Basic lightning	yes	yes
Daylight	no	no

Main Services (can be rented from Exhibitors Services)	Yes	No	Comments
Electricity 220 V 10 A	x		
Electricity 400 V 16-125 A	x		
Electricity 400 V 150-400 A	x		
Water	x		1/2 connection, pressure up to 5 kg/sg. cm
Waste water	x		pumped from stand up to ceiling
Compressed air	x		up to 6 kg/sq. cm
Wire suspension from ceiling	x		
WiFi	x		
High Speed Internet	x		