



STAND PACKAGES

It is important that the design of your stand reflects the way you wish to welcome your customers. Therefore, you should ideally start planning your stand design and layout as soon as you have decided to be an exhibitor at a trade fair. However, designing the perfect stand is easier said than done. To make the whole process a little easier for you, we have produced a selection

of standard stand packages in different price categories. You decide how you wish to present your company and your products, and we'll make sure your stand is exactly the way you want it. All for a fixed price. Please browse through the brochure to get some ideas, and once you have found what you want, we'll be ready to help

ELMIA EXHIBITOR SERVICE

ELMIA EXHIBITOR SERVICE – WE HELP YOU MAKE THE MOST OF YOUR FAIR PARTICIPATION!

STAND SERVICE

STAND SERVICE – BEING YOUR GUIDE

Contact us with any practical queries about taking part in the fair! We can help you out with everything from power connection and furnishings, to a turnkey stand in wood or aluminium that's ready to use on arrival.

STAND DESIGN

STAND DESIGN – TAILORING TO YOUR REQUIREMENTS

If you feel that none of our standard packages meets your requirements, we can provide professional advice on how to use colour, shape, furnishings and lighting to make your stand as attractive as possible..

TEXT & GRAPHICS

TEXT & GRAPHICS – SHAPES YOUR MESSAGE

We can provide some good advice about how to design your message at your stand. We can help out with any wishes you may have regarding texts, logos and other graphics. You can order signs, fascia texts, shelf hangers and more in different materials, shapes and colours.



Complete stand WOOD _____ 4



Complete stand ALU _____ 5



A1 _____ 6



A3 _____ 7



A4 _____ 8



A5 _____ 9



A6 _____ 10



T1 _____ 11



T2 _____ 12



T4 _____ 13



T5 _____ 14

Carpet for hire / Painting _____ 15

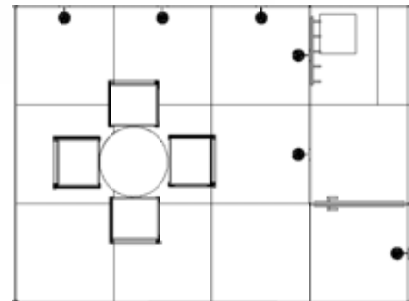
Accessories _____ 16

Stand design _____ 17

Stand Package order form _____ 20



*Basic price up to 12 m2 SEK 11,900
Additional SEK 410 per m²*



Complete stand WOOD

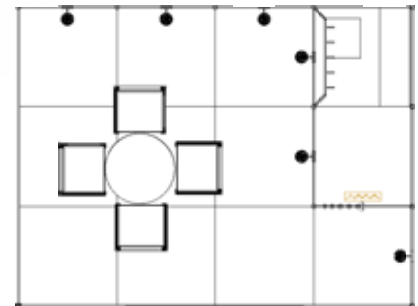
Art no. 51 300

Stand package includes:

- Walls, H 2.5m x W 1m
- Standard wall colour
- Standard fascia colour
- Carpet tiles to hire
- Alu fascia inc. company name (Arial)
- One spotlight/wall section
- One table
- Four chairs
- Lockable area/white door
- Power point, 1-Phase, 230 V, 10A
- Cleaning
- Shelving 1m
- Clothes hangers
- Wastepaper basket



Basic price up to 12 m2 SEK 14,500
Additional SEK 480 per m²



Complete stand ALU

Art no. 81 000

Stand package includes:

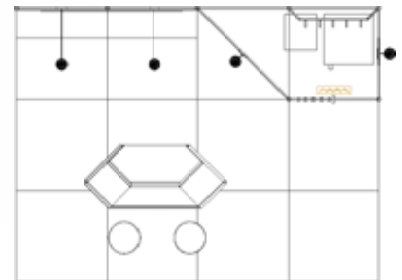
- Walls, H 2.5m x W 1m
- Standard wall colour
- Standard fascia colour
- Carpet tiles to hire
- Alu fascia inc. company name (Arial)
- One spotlight/wall section
- One table
- Four chairs
- Lockable area/white door
- Power point, 1-Phase, 230 V, 10A
- Cleaning
- Shelving 1m
- Clothes hangers
- Wastepaper basket



Price example – 12 m²

SEK 12,600

exc. logos and plants/flowers



A1

Minimum dimension – 12 m²

SEK 1050/m²

If you need a stylish open stand, this is the solution for you.

You can display products on the shelves, which come with directional lighting. A bar counter and two stools enable discussion and socialising. The store room contains a refrigerator, coat rail and waste bin.

Stand package includes:

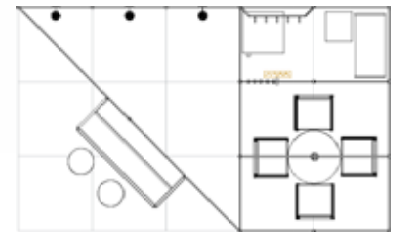
Art no.	Article	Quantity
65210	Carpet tiles to hire, yellow	12
88100	Wall Alu, straight, 1m	5
88185	Wall Alu, diagonal, 1m	1
88013	Standard wall colour for Alu system, yellow	6
88207	Folding door Alu, 1m, white	1
88700	Shelf Alu, straight	4
62300	Spotlight, short-armed, 100W	2
62310	Spotlight, long-armed, 100W	2
62100	Power point, 1-phase 230V, 10A	1
53265	Info-counter Tech, curved	1
53355	Bar stool, Venus	2
53420	Refrigerator, 150l	1
53470	Wastepaper basket, cardboard	1
89365	Coat rail Wall, Alu	1
54100	Cleaning on each day of the fair	



Price example – 15 m²

SEK 19,800

exc. logos and plants/flowers



A3

Minimum dimension – 15 m²

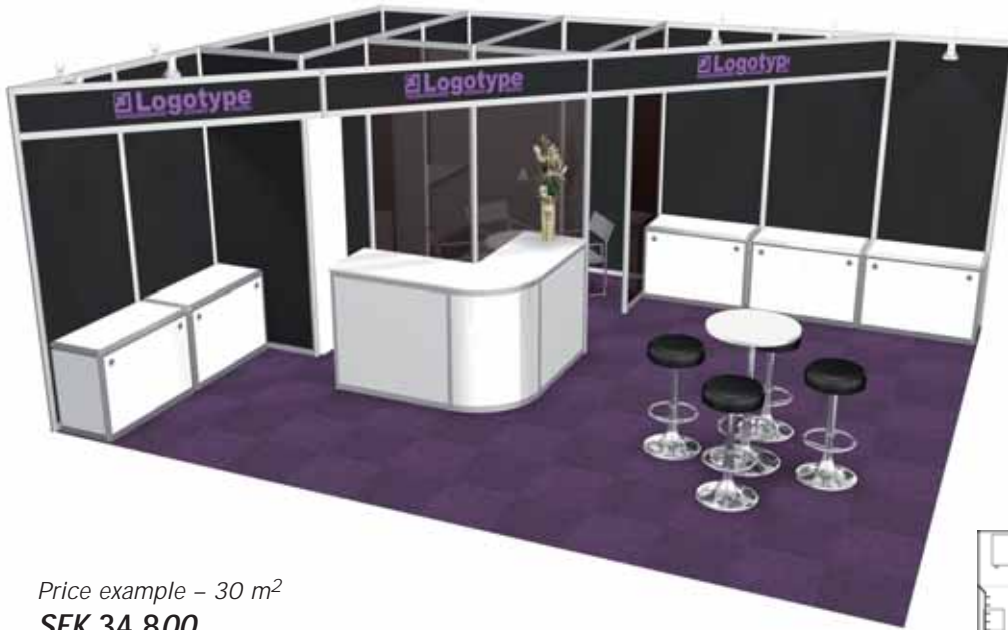
SEK 1,320/m²

With a separate conference space including chairs and table, this stand is ideal for talking to customers in peace and quiet.

Thanks to the smoked Perspex walls you can still see what's going on outside the private area. The diagonal fascia gives the stand a spacious impression and the check carpet livens up the floor

Stand package includes:

Art no.	Article	Quantity
65180	Carpet tiles to hire, denim	8
65170	Carpet tiles to hire, grey	7
88100	Wall Alu, straight, 1m	10
88102	Standard wall colour for Alu system	10
88145	Wall Alu, straight, 1m smoked plexiglass	3
88207	Folding door Alu, 1m, white	1
88490	Fascia Alu, diagonal, 3m	1
88103	Standard fascia colour	3
62300	Spotlight, short-armed, 100W	3
62340	Seating area light	1
62100	Power point, 1-phase 230V, 10A	1
53250	Table diam. 70cm	1
53320	Armchair, grey fabric	4
53260	Info-counter Tech	1
53355	Bar stool, Venus	2
53420	Refrigerator, 150l	1
89340	Storage shelving Store	1
53470	Wastepaper basket, cardboard	1
89365	Coat rail Wall, Alu	1
54100	Cleaning on each day of the fair	



Price example – 30 m²

SEK 34,800

exc. logos and plants/flowers



A4

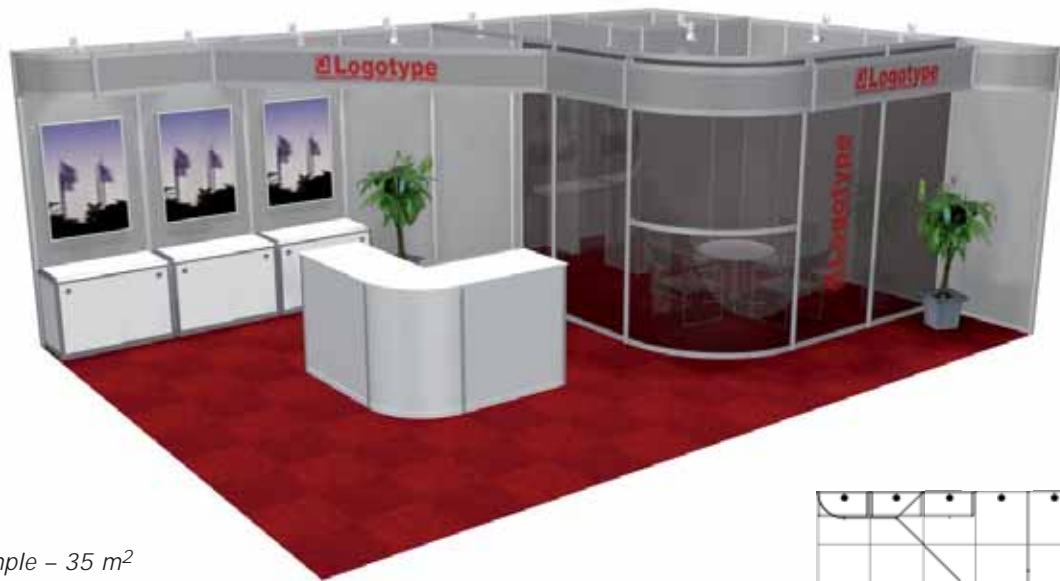
Minimum dimension – 25 m²

SEK 1160/m²

The A4 stand has a special layout with large display surfaces and a central point by the info-counter. The conference space behind the counter is perfect for uninterrupted discussion, while the high table and bar stools can provide your customers with a few minutes' rest. The lockable base units have sliding doors and a shelf inside for brochures and products

Stand package includes:

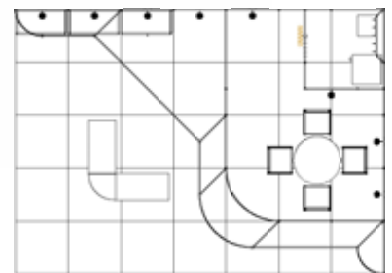
Art no.	Article	Quantity
65200	Carpet tiles to hire, purple	30
88100	Wall Alu, straight, 1m	14
88015	Standard wall colour for Alu system, black	14
88145	Wall Alu, straight, 1m smoked plexiglass	3
88207	Folding door Alu, 1m, white	1
88480	Fascia Alu, diagonal, 2m	1
88475	Fascia Alu, diagonal, 1.5m	2
88025	Standard fascia colour for Alu system, black	6.5
62300	Spotlight, short-armed, 100W	5
62340	Seating area light	1
62100	Power point, 1-phase 230V, 10A	1
53355	Bar stool, Venus	4
53245	Hi-Top bar table	1
53250	Table diam. 70cm	1
53320	Armchairs, grey fabric	4
89230	Counter Quick	2
89231	Counter Quick, corner section	1
89110	Base units Tech	5
53420	Refrigerator, 150l	1
89340	Storage shelving Store	1
53470	Wastepaper basket, cardboard	1
89365	Coat rail Wall, Alu	1
54100	Cleaning on each day of the fair	



Price example – 35 m²

SEK 38,080

exc. logos and plants/flowers



A5

Minimum dimension – 30 m²

SEK 1088/m²

If you need an exclusive yet well-balanced stand, this is the ideal solution.

The curved fascia profiles liven up the stand, but in a discreet way so as not to draw the focus away from your products and message. There is plenty of visitor contact space around the info-counter, and more private meetings can be held in the conference room.

Stand package includes:

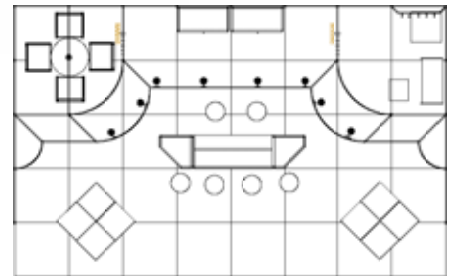
Art no.	Article	Quantity	Art no.	Article	Quantity
65130	Carpet tiles to hire, red	35	88460	Fascia Alu, diagonal, 0.5m	5
88100	Wall Alu, straight, 1m	11	88450	Fascia Alu, curved, 0.5m radius	2
88110	Wall Alu, straight, 0.5m	6	88021	Standard fascia colour for Alu system, grey	10.5
88011	Standard wall colour for Alu system, grey	14	62300	Spotlight, short-armed, 100W	8
88145	Wall Alu, straight, 1m smoked plexiglass	3	62100	Power point, 1-phase 230V, 10A	1
88110	Wall Alu, straight, 0.5m	1	89230	Counter Quick	2
88146	Wall Alu, straight, 0.5m smoked plexiglass	1	89231	Counter Quick, corner section	1
88147	Wall Alu, curved, 1m radius, smoked plexiglass	1	89110	Base units Tech	3
88207	Folding door Alu, 1m, white	1	53240	Table diam. 90cm	1
88310	Fascia Alu, 1m	2	53320	Armchair, grey fabric	4
88330	Fascia Alu, 2m	1	53420	Refrigerator, 150l	1
88480	Fascia Alu, diagonal, 2m	1	53470	Wastepaper basket, cardboard	1
88410	Fascia Alu, curved, 1m radius	1	89365	Coat rail Wall, Alu	1
			54100	Cleaning on each day of the fair	



Price example – 40 m²

SEK 39,920

exc. logos and plants/flowers



A6

Minimum dimension – 40 m²

SEK 998/m²

This stand offers a wide range of solutions for meeting customers, either around the podiums or at the bar counter. For more detailed discussion, move into one of the two conference rooms.

With all these meeting-places in your stand, there is plenty of space for booked and unbooked meetings during the fair.

Stand package includes:

Art no.	Article	Quantity	Art no.	Article	Quantity
65250	Carpet tiles to hire, sand	40	53260	Info-counter Tech	1
88100	Wall Alu, straight, 1m	18	89114	Corner end section	2
88102	Standard wall colour for Alu system	18	89150	Podium Quick, 50 x 50 H 80cm	2
88120	Wall Alu, curved, 1m radius	1	89140	Podium Quick, 50 x 50 H 60 cm	4
88160	Wall Alu, curved, 1m radius, smoked plexiglass 1	1	89130	Podium Quick, 50 x 50 H 40 cm	2
88207	Folding door Alu, 1m, white	2	53250	Table diam. 70cm	1
88310	Fascia Alu, 1m	2	53320	Armchair, grey fabric	4
88350	Fascia Alu, 3m	1	53355	Bar stool, Venus	6
88410	Fascia Alu, curved, 1m radius	2	89110	Base units Tech	2
88450	Fascia Alu, curved, 0.5m radius	2	53420	Refrigerator, 150l	1
88460	Fascia Alu, diagonal, 0.5m	6	53470	Wastepaper basket, cardboard	1
62300	Spotlight, short-armed, 100W	8	89365	Coat rail Wall, Alu	1
62340	Seating area light	1	89340	Storage shelving Store	1
62100	Power point, 1-phase 230V, 10A	1	54100	Cleaning on each day of the fair	1



Price example – 9 m²

SEK 12,573

exc. logos and plants/flowers



T1

Minimum dimension – 9 m²

SEK 1,397/m²

Simplicity can be the best eye-catcher.

The prominent fascia enhances this stand and grabs people's attention. Available in any of our standard colours. The tall podiums provide the ideal forum for displaying your products.

Stand package includes:

Art no.	Article	Quantity
65130	Carpet tiles to hire, red	9
51100	Wall Wood, straight, 1m	9
51005	Standard Wood wall colour, grey	10
51130	Door Wood, 1m, white	1
88510	Décor board Alu, top section, 1.0 x 0.27m	8
62300	Spotlight, short-armed, 100W	5
62100	Power point, 1-phase 230V, 10A	1
89230	Counter Quick	1
89151	Podium Quick, 50 x 50 H 104 cm	2
53355	Bar stool, Venus	2
53420	Refrigerator, 150l	1
53470	Wastepaper basket, cardboard	1
51187	Wall hooks x 4, Wood system	1
54100	Cleaning on each day of the fair	

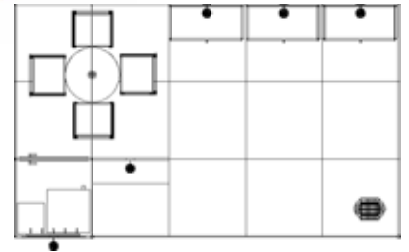
T1



Price example – 15 m²

SEK 17,850

exc. logos and plants/flowers



T2

Minimum dimension – 12 m²

SEK 1190/m²

A smart layout that offers a combination of a wide open front for welcoming visitors, and a seating area with a store room inside.

The shelves highlight the products and draw visitors into the stand

Stand package includes:

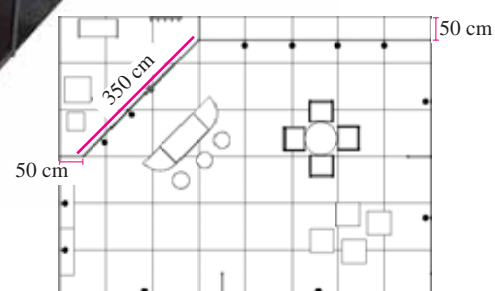
Art no.	Article	Quantity
65210	Carpet tiles to hire, yellow	2
65110	Carpet tiles to hire, green	13
51100	Wall Wood, straight, 1m	14
51007	Standard Wood wall colour, yellow	14
51130	Door Wood, 1m, white	1
88370	Fascia Alu, 4m	1
88023	Standard fascia colour for Alu system, yellow	4
51180	Shelf Wood, straight	2
89258	Brochure stand Tower	1
62300	Spotlight, short-armed, 100W	5
62340	Seating area light	1
62100	Power point, 1-phase 230V, 10A	1
89110	Base units Tech	3
53250	Table diam. 70cm	1
53320	Armchair, grey fabric	4
53420	Refrigerator, 150l	1
53470	Wastepaper basket, cardboard	1
51187	Wall hooks x 4, Wood system	1
54100	Cleaning on each day of the fair	



Price example – 48 m²

SEK 34,800

exc. logos and plants/flowers



T4

Minimum dimension – 40 m²

SEK 725/m²

A spacious solution, ideal for exhibitors who need plenty of open space.

This stand includes a variety of furniture designed for casual sitting and standing.

Shelving can be mounted along the walls as required.

Stand package includes:

Art no.	Article	Quantity
65297	Carpet tiles to hire, graphite	13
65170	Carpet tiles to hire, grey	35
51100	Wall Wood, straight, 1m	21
51103	Wall Wood, straight, 0.5m	4
51160	Standard fascia colour	11.5
51130	Door Wood, 1m, white	1
88146	Wall Alu, straight, 0.5m smoked plexiglass	4
88340	Fascia Alu, 2.5m	2
88360	Fascia Alu, 3.5m	1
88370	Fascia Alu, 4m	1
88022	Standard fascia colour for Wood system, red	12.5
51180	Shelf Wood, straight	4
62300	Spotlight, short-armed, 100W	12
62100	Power point, 1-phase 230V, 10A	1
53250	Table diam. 70cm	1
53320	Armchair, grey fabric	4
53355	Bar stool, Venus	3
89230	Counter Quick	1
89231	Counter Quick, corner section	2
89150	Podium Quick, 50 x 50 H 80cm	2
89140	Podium Quick, 50 x 50 H 60 cm	1
89151	Podium Quick, 50 x 50 H 104 cm	1
53420	Refrigerator, 150l	1
53470	Wastepaper basket, cardboard	1
51187	Wall hooks x 4, Wood system	1
54100	Cleaning on each day of the fair	

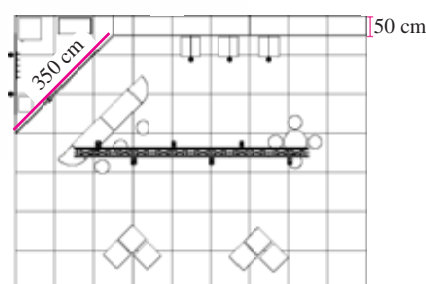
T4



Price example – 63 m²

SEK 46,494

exc. logos and plants/flowers



T5

Minimum dimension – 48 m²

SEK 738/m²

This open design is perfect for exhibitors seeking a spacious, airy solution.

Having the store room in one corner provides a nice backdrop for your furniture arrangement, and the bar is ideal for providing refreshments and information.

The light rig in the ceiling is crucial to the overall lighting effect. Six footlights provide the right lighting throughout the stand

Stand package includes:

Art no.	Article	Quantity
65100	Carpet tiles to hire, blue	63
51100	Wall Wood, straight, 1m	20
51103	Wall Wood, straight, 0.5m	5
51003	Standard Wood wall colour, white	12.5
51130	Door Wood, 1m, white	1
62300	Spotlight, short-armed, 100W	2
62310	Spotlight, long-armed, 100W	3
62480	Rig/m	6
62470	Wire suspension Hall A, B or C, max 50kg	2
62326	Spotlight KANNA 1000W	6
62210	Power point, 3-phase 400V, 16A, CEE	1
62100	Power points, 1-phase 230V, 10A	2
89150	Podium Quick, 50 x 50 H 80cm	5
89140	Podium Quick, 50 x 50 H 60 cm	4
89151	Podium Quick, 50 x 50 H 104 cm	2
53355	Bar stool, Venus	7
53245	Hi-Top bar table	1
89230	Counter Quick	2
89231	Counter Quick, corner section	2
53420	Refrigerator, 150l	1
53470	Wastepaper basket, cardboard	1
51187	Wall hooks x 4, Wood system	1
89340	Storage shelving Store	1
54100	Cleaning on each day of the fair	

FLOOR CARPET

FLOOR CARPET TILES TO HIRE

Tiles 50x50cm



light blue
Art no. 65 240



blue
Art no. 65 100



wine-red
Art no. 65 230



sand
Art no. 65 250



denim
Art no. 65 180



red
Art no. 65 130



beige
Art no. 65 160



bright red
Art no. 65 298



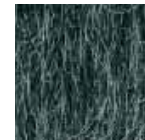
brown
Art no. 65 140



green
Art no. 65 110



orange
Art no. 65 215



graphite
Art no. 65 297



yellow
Art no. 65 210



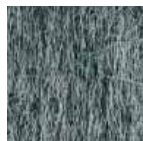
blue-green
Art no. 65 190



dark blue
Art no. 65 105



purple
Art no. 65 200



grey
Art no. 65 170



bright green
Art no. 65 296



black
Art no. 65 150

Colours may differ slightly from the actual colour of the carpet

COLOUR

STANDARD COLOURS ON WALLS AND FASCIAS

Painting (NCS-Nr.)	PMS
Red S 2570-Y90R	186 C
Green S 4050-G	349 C
Grey S 5500	430 C
Yellow S 0580-Y	108 C
Blue S 3065-R90B	293 C
Black	
White	



ACCESSORIES

FIT OUT YOUR STAND – WE HAVE WHAT YOU NEED!



ACCESSORIES



STAND DESIGN

WE CAN DESIGN YOUR STAND

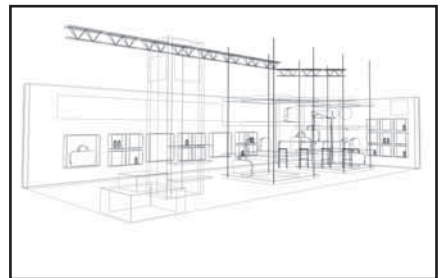
If you are looking for a more personal touch at your stand, one that truly brings out the best, contact us at Stand Design!

We design and build your stand to stimulate visitors and expose your business in the best way.

We offer professional advice about all aspects of participating in a trade fair, to ensure you can concentrate on your core business.

As a result, once the fair begins you can devote all your energy to your customers.

The practical details will already have been taken care of!



STANDESIGN

STAND PACKAGE ORDER FORM



I WOULD LIKE TO ORDER THE STAND CALLED:	STAND NUMBER
I WOULD LIKE TO ORDER THE WOOD COMPLETE STAND <input type="checkbox"/> FASCIA TEXT _____ FASCIA TEXT COLOUR _____	STANDARD WALL COLOUR <input type="checkbox"/> Black <input type="checkbox"/> Grey <input type="checkbox"/> White <input type="checkbox"/> Blue <input type="checkbox"/> Red <input type="checkbox"/> Green <input type="checkbox"/> Yellow
I WOULD LIKE TO ORDER THE ALU COMPLETE STAND <input type="checkbox"/> FASCIA TEXT _____ FASCIA TEXT COLOUR _____	STANDARD FASCIA COLOUR <input type="checkbox"/> Black <input type="checkbox"/> Grey <input type="checkbox"/> White <input type="checkbox"/> Blue <input type="checkbox"/> Red <input type="checkbox"/> Green <input type="checkbox"/> Yellow
ADDITIONAL REQUESTS:	CARPET COLOUR: Article no.

Elmia Exhibitor Service

- Elmia Stand Service
- Elmia Stand Design
- Elmia Text & Graphics

Tel: +46 (0)36 15 20 00

E-mail: service@elmia.se

Address: Elmia AB, Box 6066

SE-550 06 Jönköping, Sweden

- Please position our logo as shown in the sample stand.
- Please position our logo as shown in the enclosed sketch.
- We require no logo, signage etc.

Please send your originals in eps format with the PMS no. to textobild@elmia.se

Please feel free to contact us with any other requests!

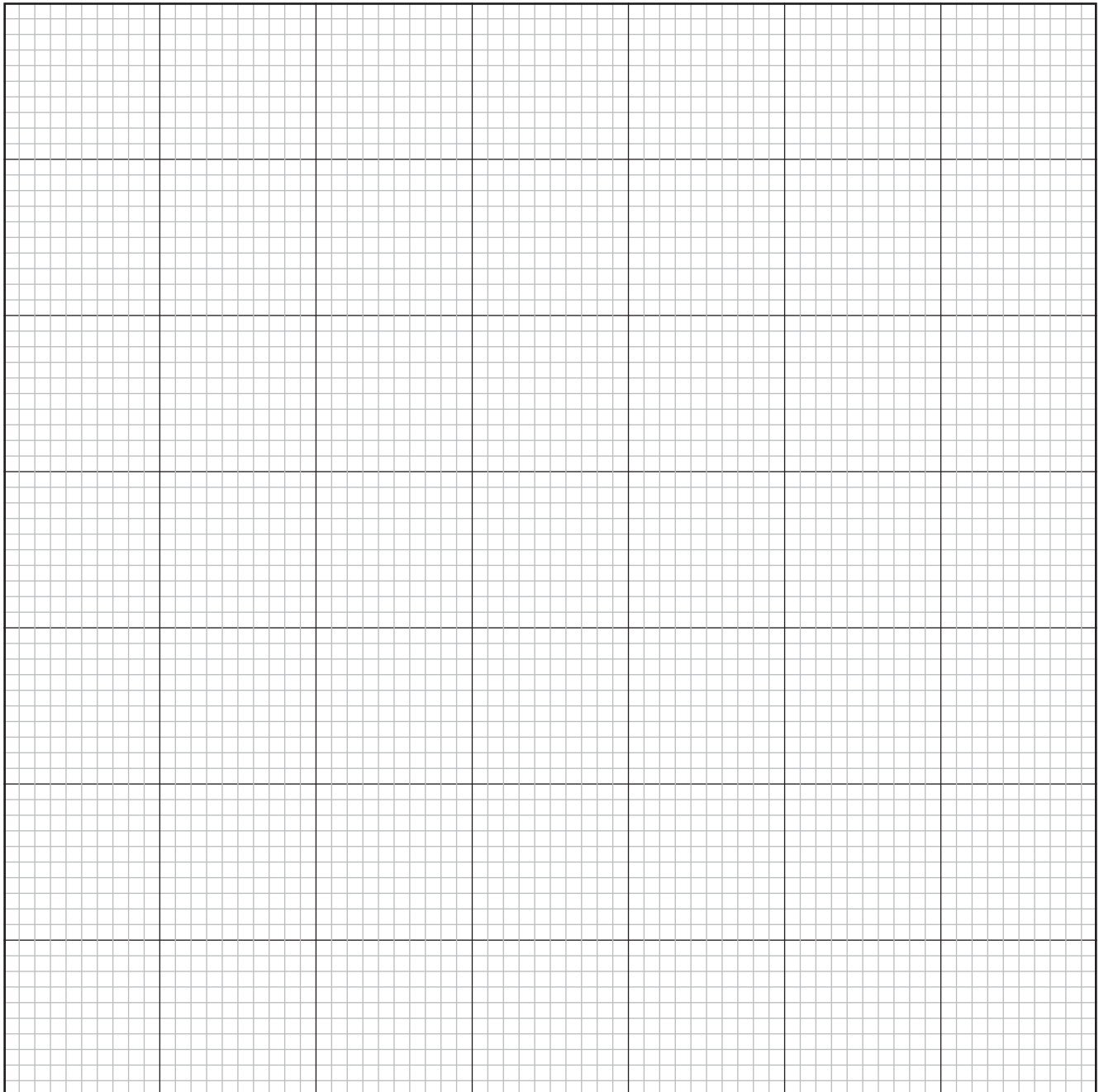
TITLE OF FAIR/EXHIBITION:	STAND NUMBER:
COMPANY:	CONTACT PERSON:
BILLING ADDRESS:	
POSTAL ADDRESS:	E-MAIL:
PHONE:	FAX:
LOCATION	DATE SIGNED

Please fax to +46 (0)36 – 12 08 88

Please design your own stand here, including any deviations and special requests, and we'll build it.

Stand sketch

Please state the stand number and position/direction in the exhibition hall. If possible, please also state the neighbouring stand number. Specify positions for power points, lighting, wires, plumbing etc.



To build your stand, we need to know where you require the following products. Please add the relevant symbols to your sketch as shown below.

X	Power point 10 A	Ⓢ	Spotlight (short-armed)	Ⓢ	ISDN	▨	Sink/draining board
⤿	Heavy-duty power point 16A/25A/63A*	—	Wall module/Partition	Ⓜ	Internet connection	●	Compressed air connection
F	Floodlight	V	Door module, right/left opening	T	Telecom connection	Ⓜ	Refrigerator
K	Kanna spotlight	V	Wire	X	Water/Drainage out	X	Rig
L	Spotlight (long-armed)	Ⓜ	Telpher	□	Water connection	P	Plasma screen

Please fax to +46 (0)36 – 12 08 88

CONTACT INFORMATION EXHIBITOR SERVICE

Stand Service/Stand Design

E-mail: service@elmia.se

Tel +46 (0)36-15 20 00

Fax +46 (0)36-12 08 88

Text & Graphics

E-mail: textobild@elmia.se

Tel +46 (0)36-15 20 00

Fax +46 (0)36-12 22 66



Elmia AB is the third largest fair organiser in Sweden and arranges 12-15 trade fairs annually within a wide range of business areas: Industry, Transport, Forestry and Wood, and Agriculture and the Environment. Many of these are among the leading fairs in Europe and the rest of the world, such as Elmia Subcontractor and Elmia Wood. Elmia has four halls with a total of around 34,000 m², and 300,000 m² outdoors. An ultra-modern congress and concert hall has made Elmia one of Sweden's major conference and culture centres.

Further information: Elmia AB, Box 6066, SE-550 06 JÖNKÖPING, Tel +46 36 15 20 00, Fax +46 36 12 08 88, Internet: www.elmia.se